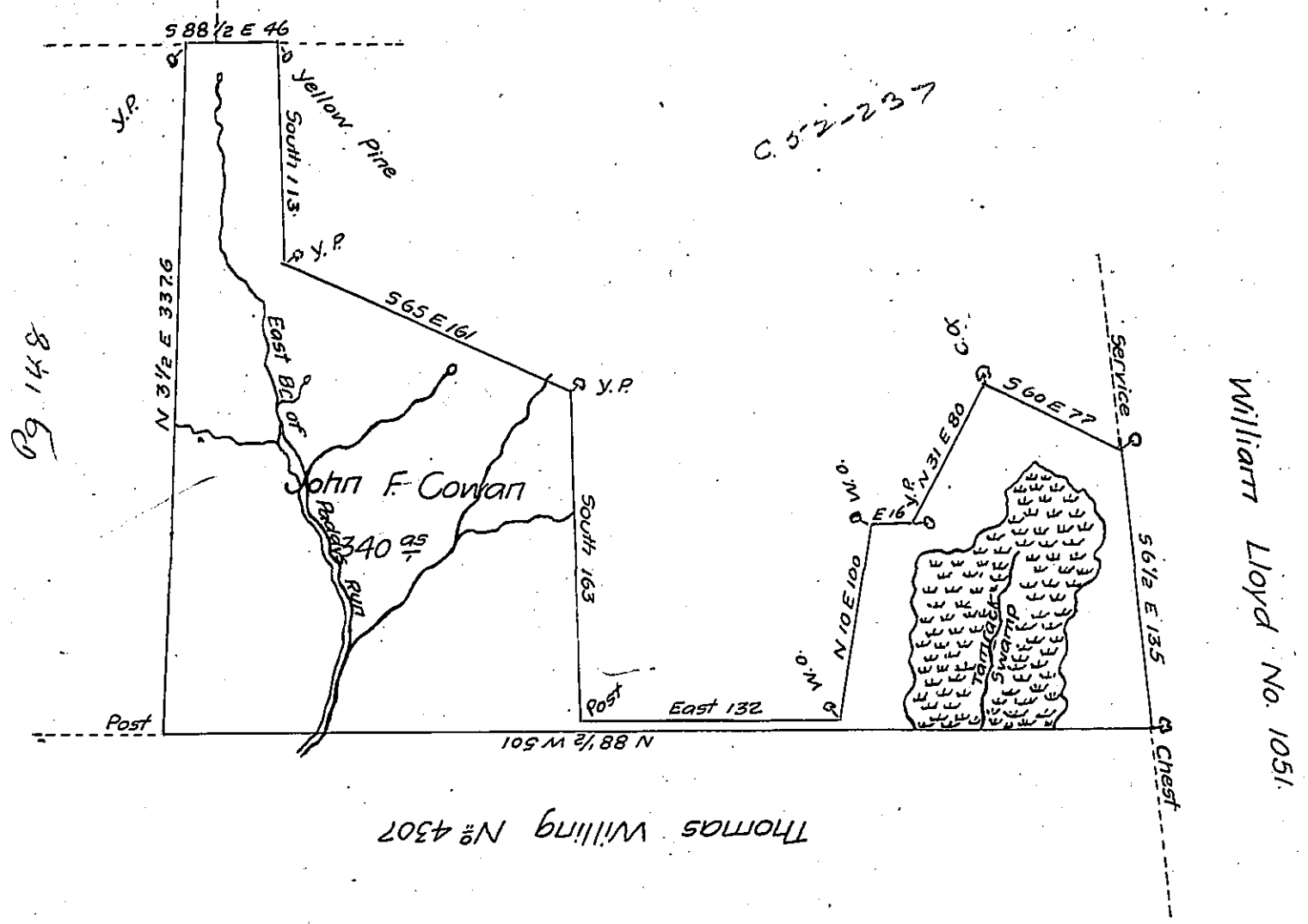


Henry Drinker

N° 3630

N° 3624



THOMAS WILLIART No 4307

Situate in Chapman Township Clinton County on the east Br of Paddy's Run & a Small Branch of Young-Wormans Creek Surveyed to John F. Cowan on the 6th day of December 1851 in pursuance of his Warrant for 340 acres bearing date the 19th day of November 1851 Containing three hundred and forty acres with Allowance of Six per Cent for Roads &c.

To J. Porter Brawley Esquire

B. W. Morrison C.S.

Surveyor General

IN TESTIMONY that the above is a copy of the original remaining on file in the Department of Internal Affairs of Pennsylvania, made conformably to an Act of Assembly approved the 16th day of February, 1833, I have hereunto set my Hand and caused the Seal of said Department to be affixed at Harrisburg, this twenty sixth day of July 1904.

James R. [Signature]
 Secretary of Internal Affairs